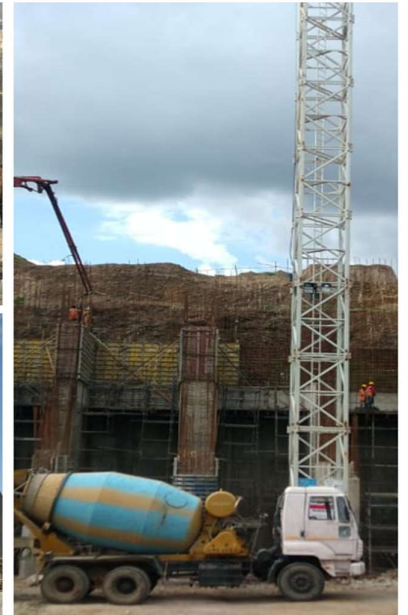


# Company Profile-2024

**OUR SOLUTIONS ARE CONSISTENT  
WITH THE GOALS OF OUR CLIENTS**



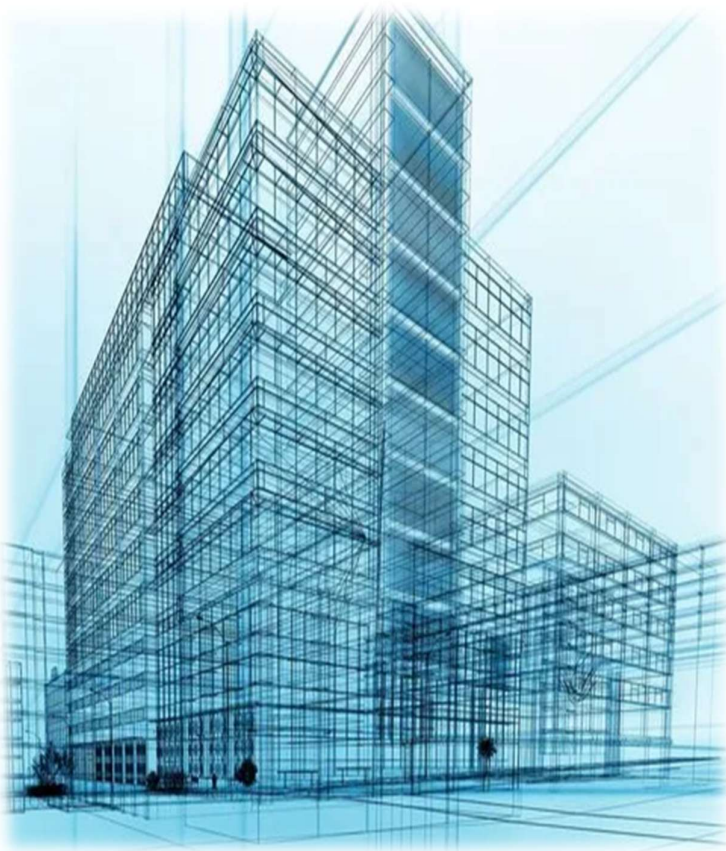
**STB-1993**

# 1-ABOUT US

Prime Contracts is a Groups of Civil & Structure Engineer's and Contactor's, Registered in **DDA, CPWD-1994-95**. Prime Contracts is dedicated offering a full range of full range of services for significant **PMC & EPC Construction Projects** we are committed to presenting creative and sustainable solutions that satisfy the requirements of our customers. In order to deliver projects on time, within budget and without sacrificing quality, our team of specialists uses the most update technology and industry best practices.

Prime Contracts prides itself in listening to the client's objectives and project goals and then recommending the most efficient construction path and solution-oriented assistance.

We are pleased to work with owner clients directly, large government agencies, contractors or in support of other PMC Design /engineering firms.



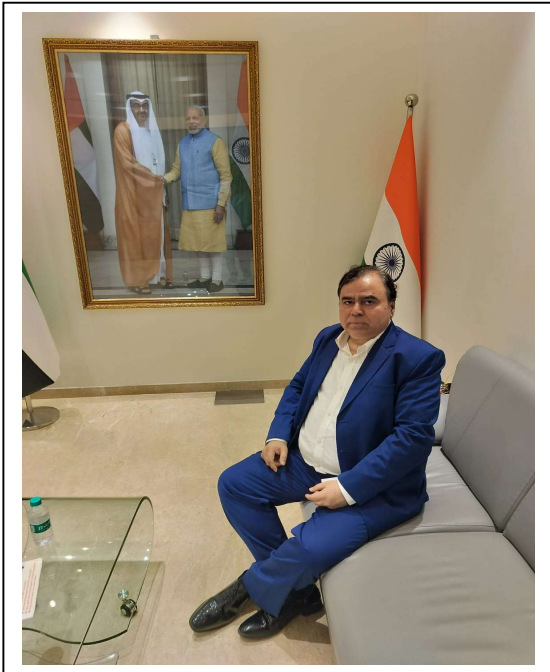
We help its clients improve their performance by offering services and innovative solutions in order to ensure that their assets, products, infrastructure and processes meet standards and regulations in terms of **PMC Work** like Details design, Quality, Health and Safety, Environmental Protection and Social responsibility, we are focusing on-

- Submission of Tender Prestage & post stage.
- Analysis of BOQ / QS Work & Coating work.
- Analysis Value of projects.
- Interface Management.
- Execution Management.
- Reduction in Capital & Expenditures Cost.
- Third party Investigation.
- Saving of Hired equipment Cost.
- Saving of Manpower Cost.
- Focus of HSE & Quality Management.





## 2-Introduction about Company Partner's



**Mr. Akbar Puttan Khan** is as Managing Director at **Prime Contracts**. has headed the company's transformation from a construction major into a diversified infrastructure group of global scale, developing and building responsible infrastructure through next practices. He is a Graduate with more than 35 years of experience in the field of Government Lessoning, Logistic, Construction and Management of Large & diversified Projects. The result is a Prime Contracts plays a leading role in meeting the massive infrastructure needs of India, leveraging best-in-class equipment and technology, knowledge-driven processes, and innovation-led next practices.

Mr. Akbar Khan has been an integral figure in driving strategic business efforts and capitalizing upon corporate growth opportunities. He has worked with almost all leading & reputed National & Multination Companies/Authorities in the Country. He has been largely instrumental in taking **Prime Contracts** into its present position with his business acumen & leadership qualities.



**Mr. Shahid Ali** is Associate with **Prime Contracts** as Project Director of company & He is a licensed Electrical Engineer did "**BSc. Engineering Electrical**" from Aligarh Muslim University -**1979** as Horner with more than 45 years of experience in project management, team building, has extensive experience in conceptual estimating, scheduling, production analysis, project management, and construction-related claims. The types of work that **Mr. Shahid Ali** has been involved with have included the construction of Indra Gandhi Indoor Stadium, ISBT-Terminal, Anand Vihar Terminal more worked as EPC & PMC Division.

His visionary leadership made the company work on a high-quality professional team utilizing the world's best technology used for advanced construction equipment and methodology under his close support which makes Prime Contracts one of the leading construction Group. Mr. Shahid Ali is a highly skilled and competent civil engineer with a proven track record of solid and safe construction projects. He has developed expertise in collaborating with construction and technical professionals at all stages of the project, strong multi-tasked with an exceptional ability to work successfully under high pressure.

## **3-OUR SERVICES**

With over years' experience and real focus on customer satisfaction, you can rely on us for your next project, we provide Architectural, Engineering Services and Project Management Services Across all over India.



**Tendering & Contract**



**Project Management**  
**PMC**

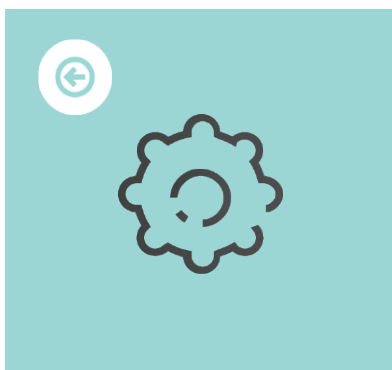
**R.C.C & Structural**  
**Steel Details**  
**Design**

**BOQ & Contract**  
**Management**

**Execution**  
**Work**

**Quality & HSE**  
**Management**

**Manpower**  
**Outsourcing**



**R.C.C & Structural**  
**Steel Details**  
**Design**



# 4-Accurate Project Estimates/Budgets / Cost Management.

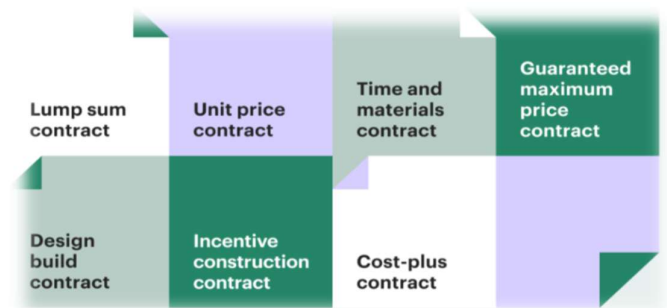
Budgeting is a specialized process that provides a quantitative estimate of the likely costs of the project elements. Throughout the study phases we use our past experience and the evolving information provided by our engineering processes to develop the budget and estimates for resources and activities. After project approval, estimates are based on final project plans and scope of work. These are further refined when actual tender information is available and construction commences.

## Cost Estimating

- ✚ Incorporation of the work Breakdown Structure into each activity to enable scope definition, reporting and reviews.
- ✚ Accuracy of quantities thought engineering effort and rates obtained from market input captured inappropriately defined procurement packages allocated to a Cost Breakdown Structure.
- ✚ Flexibility of reporting and analyses by capturing all items in a database.
- ✚ Review information is extracted from the central repository using pivot table.
- ✚ Simple and effective presentation of relevant data enables informed decision making.

We manage the Tender process on behalf of the Owner by short-listing qualified contractors from our extensive database of contractors and vendors, distributing the Tender Documents, following up on Tender queries, evaluating bids technically and commercially and making recommendations to the Owner. We also prepare the contract to be signed between the Owner and the successful Contractor(s).

1. Making BOQ.
2. Making Budgeting.
3. Doing Analysis of Rate.
4. Quantity Surveying work.
5. Making Comparative statements.
6. Making of LOI.
7. Award Tender / Work order.
8. Checking of Contactor's running Billing & Quantities.



## Cash Flow

- ✚ Accurate cash flow, and ultimately financial models, are derived by linking the estimate data to the execution schedule through the use of the WBS- based data capturing process

## Cost Control

- ✚ Accurate cost control is achieved through diligent capturing of data at prescribed recurrence periods.



# 5-Project Management.

Prime Contracts, we specialized in providing expert project Management consulting service that are customized to meet your specific needs. With a **TEAM** of highly experienced and seasoned consultants. We bring a wealth of knowledge and expertise in successfully reputed projects in India diverse Industrial, commercial, STP (WwSTP), Micro Irrigation project Oil & Gass & Commercial & Residentials projects.

Capitalizing on our vast experience as General Contractors with an intricate knowledge of the market, and our passion for the construction industry, we transfer this know-how to our clients ensuring an effective no-nonsense approach in realizing their projects with respect to Cost, Quality, Time and Safety.

Our services encompass all the phases of the construction process from Pre-Design through Completion Our consultant excels in strategic planning, working closely with our **TEAM** to develop comprehensive project plans that along with your Goals and objectives. We analyze

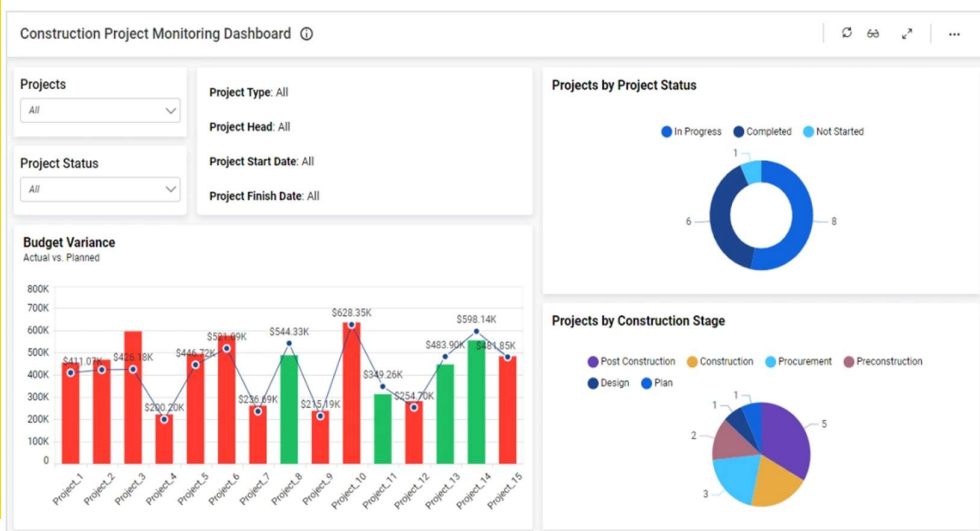
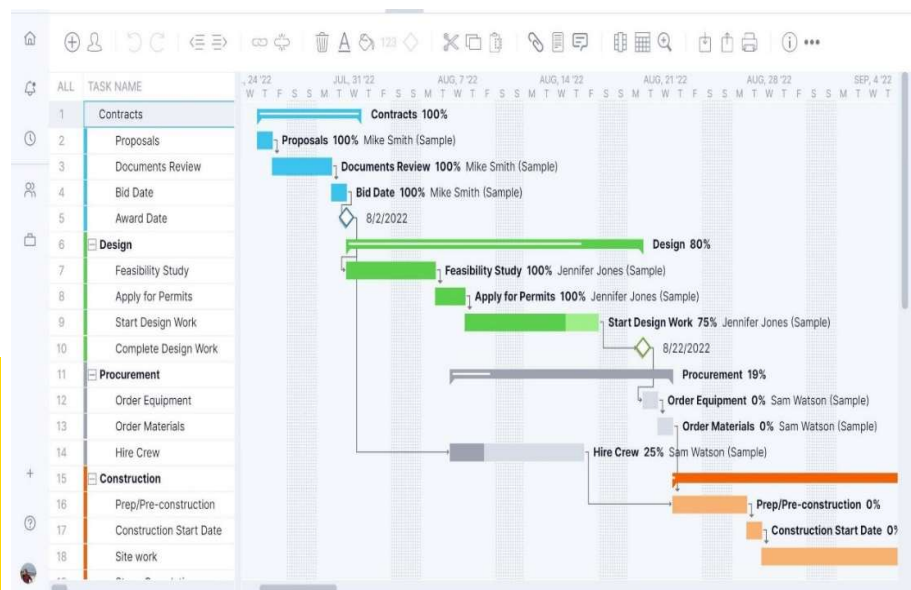
We manage the various phases of the project acting as an extension of the Owners' organization. Depending upon the project requirements, we establish the procedure for the appointment of an Architect/Engineer to produce the design and a Main Contractor to carry out the construction. We set the strategy and manage the activities of the A/E and Main Contractor covering all phases from pre-construction through completion and act as the single point of contact with the Owner.

These services can be provided to Owners, Designers or Contractors:

- Value Engineering (Design Review)
- Cost Analysis and Estimation
- Procurement
- Claims Management
- Troubleshooting

## OUR VISION

- Project Planning.
- Project Scheduling.
- Project Budgeting.
- Project Procurements.
- Project requirements.
- Identify potential Risks
- Make Resource allocation plan.
- Making Budgeting.
- Critical path
- S-Curve



# 6-Detailed Planning / Scheduling / Time Management.

The project scope of work and deliverable are allocated to appropriate work packages based on the work breakdown structure, The activities required to complete the scope and deliverables are identified at the relevant level of planning & Scheduling for the particular phase of projects.

We develop a project scheduling aimed at meeting predetermined milestones through allocation of adequate resources to finalized activities in time. We complete the project execution plan during the set-up and mobilization phase, ready to guide the project at implementation kick off.

- ✚ Value Engineering.
- ✚ Work package definition.
- ✚ Project Milestone target dates
- ✚ Engineering Deliverable
- ✚ Construction Strategy development
- ✚ Cost Analysis and Estimation
- ✚ Procurement Management.
- ✚ Claims Management.



## ➤ **Physical Progress**

- Preparation of detailed project schedule in MS Project covering engineering, procurement, construction, and commissioning.
- Monitoring monthly/fortnight progress of all the above, Schedule vs Actual with inputs for procurement and construction.
- Analyzing and suggesting catch up plans wherever lagging is noticed, and forecasting look ahead schedule.
- Audit of Quality & HSE system (scope will be restricted to audit and shall not include supervision)

## ➤ **Financial Progress**

Only the revenue parameters (receivables from Client's) will be monitored on a monthly basis Schedule vs Actual based on actual invoice raised to Client's and corresponding receipts of payments.

## ➤ **Reporting**

- Preparation of PPT presentation as per requirements of Client, including for Progress Review Meetings.
- Preparation of DPR & MPR (Submit in a every month).

## ➤ **Procurement Support**

- Tracking of procurement activities till receipt at site and escalating issues if any to respective stakeholders.
- Tracking of post procurement activities until delivery at site and testing and commissioning, data will be captured by concerned stakeholders.

## ➤ **Construction Support for QHSE Auditing**

- Deputation of quality and safety experts regularly and/or during critical activities to audit the Quality & HSE system and compliances.
- Deploy QHSE Manpower to ensure Quality & Safety Work's.



# 7-Detailed Engineering, R.C.C Design and Consulting.

Our associate engineers provide full multi-disciplinary conceptual, basic and detailed engineering design and consulting services.

Where appropriate, we use widely accepted industry practices and processes as a foundation, but always differentiate our services by level of detail and our fresh way of approaching challenges. The result: accurate, Quality work and innovatively engineered solution that fit for purpose.

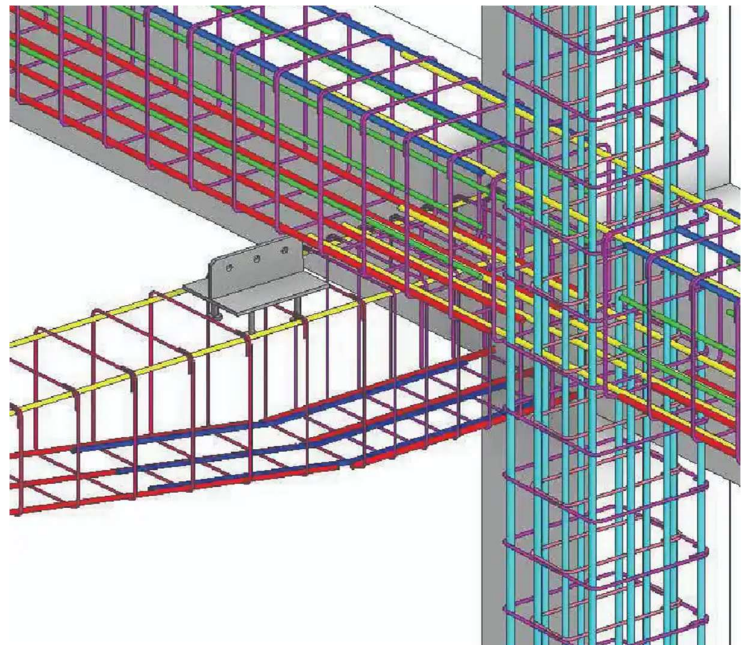
We develop ideas from concept to all final details using advanced analysis software and 3D modeling tools, Our Combined knowledge and experience guides us to focus on what is relevant and required.

In each area of competency , from developing design criteria, specifications, 3D modeling, plan layout and drawings, to schedules, bills, technical enquireies or compiling estimates, we continually review our work and challenges how we measure ourselves to ensure quality.



**"YOU DREAM IT, WE BUILD IT-As structural engineers, we transform the vision of the Architect. We like difficult and challenging projects that push the engineering complexity further. In short, we understand and build the dream of the architect into reality" intelligence."**

- Civil and Structural design
- Proof checking / peer review of design
- Seismic Engineering
- Site infrastructure design
- Mechanical-HVAC design
- Fire Fighting & Fire Protection
- Plumbing & Sanitary
- Perimeter Protection design -
  - Fencing, Security Wall, Gate, Pillars
  - External Water Supply including



## OUR MISSION

**Our mission is customer satisfaction, fulfilling all their constructional needs blend with modern technology available and our innovative design and ideas to suit local, social and ecological conditions cost effectively.**



## MAKE PURPOSAL AND CONCEPT DESIGN OPTION FOR PROJECT'S.

From client's perspective and our ideas, we make proposal options for project for next meeting. When the project's parameters are established, we will begin developing concepts. These will be influenced by project scope, budget and your individual requirements.

## DEVELOPING DESIGN

Concept design is essentially a range of solutions to the brief. We developed through drawings, floor plan and perspective sketches and computer renderings.

## SUBMITTING DETAILED DESIGN AND COST BREAK DOWN

Once resource consent is approved, your project will progress to the detailed design phase. This means we will advance your design to the level of detail that allows a construction contractor to assess the full scope of

the project. This will include construction details, materials, components, systems and finishes.



### ➤ Risk Management

- Stakeholder management for contractual issues with Client's.
- Develop contract appreciation document to identify all important clauses in the contract.
- Preparation of Contractual compliance for assuring minimal risk to project.
- Identify major potential contractual risks during project execution and provide risk mitigation strategies.
- Prepare contractual risk management plan for the project.

We as **TEAM** work diligently to optimize the allocation of resources, including personnel, equipment and budget to maximize efficiency and minimize costs.

Our consultants have a keen eye for detail and will closely monitor resource utilization throughout the project lifecycle.

- Expert Project Management consultants with a proven track record in diverse industries.
- Tailored project management solutions to meet specific client needs and goal.
- Strategic Planning, Risk Management and resource allocation expertise for project Success.
- Seamless coordination with stakeholders, ensuring effective communication and collaboration.
- Implementation of best practices and methodologies for stream lined project execution.
- Timely project monitoring, and analysis and reporting.
- Transparent and proactive approach to project control and performance management.
- Experienced consultants skilled in problem solving and decision making.





# 8-Consistent Quality Assurance & Control Risk Mitigation and Safety Management.

Safety, Risk and Quality Management planning and development of procedures are initiated during the study phases of the project, but plans and strategies are only effective when consistently applied through all the phases of projects.

We do not compromise on safety, in all aspects of our work we consider it a priority and apply tools such as HAZOP / maintainability review during design, or toolbox talks / task observation during construction, to ensure a safe environment for all.

Risk management is an essential part of pro-active project management. We focus on early project risk analysis, development of appropriate action / mitigation strategies / contingency allocation and progressive updates of the risk register. This empowers the project manager and client to take early corrective action to risk identified for meeting project objectives.

Our Passion for Quality shines through in the extent to which we apply quality control throughout the project lifecycle. Quality Planning, Assurance, Monitoring and Control are performed to agreed standards, targeted to meet procurement, construction, commissioning and handover.



## 9-Expert Construction / Execution.

Like most our service areas, application of our construction management competency begins in the study phases, with constructability reviews and identification of projects elements that will affect construction.

During the execution phase, the entire construction process is managed, from mobilization to site to the final handover of completed facility.

Early alignment of construction planning with project goals and client objectives is essential to the success of the implementation.

### ➤ Added Value

- Construction work packages are identified and scheduled, including logistics aspects.
- The appropriate contracting strategy is selected.
- Ongoing material management, control and coordination.
- Workforce planning, resourcing and management.
- Off-site quality assurance and inspections.
- Safety Management.
- Quality control according to project specification.

## Specialist Construction / Execution Projects.

- ✚ Residential & Commercial Budlings (office Tower and Headquarters/ Super Mart & Banks projects.
- ✚ Road; Bridges & Culverts.
- ✚ Thermal Power Projects (275M-R.C.C Chimney & 170M-NDCT ).
- ✚ Refinery Project.
- ✚ Micro Irrigation Projects
- ✚ Infrastructure (STP-Wate Water Treatment; 180MLD WwTF STP Plant).
- ✚ Energy; Oil & Gas projects.
- ✚ Industrial (Factories, Laboratories, Support Facilities, Rehabilitation and Refurbishment work.





# 10-Man Power Supply.

**Prime Contracts** as an Engineering & Consultant firm we have arrangement of Site staffs on monthly basis, for engineering Site execution & project management, Quality assurance, Quality Control, HSE and Third-party work and FEED jobs, we can take up As Built preparations job.

**We can deploy following Staff Personnel following categories**

- Construction Managers
- Designer's
- Managers
- Dy managers
- Sr. Engineers
- Engineers.
- Site Engineer's
- Foreman's
- Draftsman

**We can support you for following categories as per available manpower's.**

- Civil Execution Jobs.
- Project Management (PMC) work.
- Planning & Coordination.
- Tendering Works.
- Cost Control & Budgeting
- BOQ, Rate Analysis & Tendering.
- Quality Control (QA/QC)
- Health & Safety (HSE)
- PMC Jobs

**We can support you for following categories as per available manpower's.**

**We have arrangement of Supply Malda, Jharkhand & Begusarai Gangs.**

- ARRANGEMENT OF ALL PRW CONTACTOR'S
- SKILLED MANPOWER.
- SEMI SKILLED
- UNSKILLED MANPOWER
- CARPENTER'S
- BAR BINDER'S
- FITTER'S OPERATOR'S & HELPER'S
- WELDER'S



# 11-Earthmoving Equipment Supply / Rental.

We are as an Engineering & Consultant firm we have arrangement of Site **EARTH MOVING EQUIPMENT** on monthly / **Yearly** basis.

Earth-moving equipment refers to heavy machinery primarily designed to move, lift, and transport large volumes of earth, soil, rock, and debris, crucial for various construction, mining, and infrastructure projects by significantly reducing manual labor and increasing efficiency. These machines perform tasks such as digging, excavating, grading, loading, and compacting, playing a pivotal role in preparing sites for construction, laying foundations. We as TEAM work diligently Jointly worked with our Partner's or Sister's Concern earth moving agencies

## M/S S.S. CRANE SERVICES.

**M/S S.S. Crane Service** established in Maharashtra Mumbai- 1995- today its brand name in Crane supplies, lifting equipment & erection & encompasses any machinery, device, or accessory designed to lift, lower, or move heavy loads or materials, crucial across various industries like construction, manufacturing, and transportation for tasks ranging from moving building materials to installing heavy machinery. This equipment, which can range from simple ropes and pulleys to complex cranes and hoists, significantly reduces manual labor, improves productivity, and helps prevent injuries when used correctly and maintained properly.

## M/S ASNA CRANE SERVICE.










## M/S SHREE MAHAVEER ENGINEERING

M/S ANSA CRANE SERVICE & M/S SHREE MAHAVIR ENGINEERING SERVICE having wide range of Hydra, Farana, Pilling RIG's etc. Hydra cranes are lifting devices commonly used in construction, logistics, and industrial settings, known for their powerful hydraulic lifting mechanisms and wheeled chassis that enable easy mobility across job sites. These versatile machines can lift, shift, and place loads ranging from several tons to much heavier weights, typically between 9 to 16 tons depending on the model.





Fully arrangement of following earthmoving equipment on hire basis

01	<b>TALISCOPIC TYRE MOUNTED CRANE</b> Sunny Make-220MT- 88 Meter Sunny Make-250MT- 120 Meter	 
02	<b>NON-TALISCOPIC TYRE MOUNTED &amp; CRAWLER CRANE.</b> 1-P&H-50MT- 30 Meter. 2-Tata- 110MT-50 Meter	  
03	<b>HYDRAULIC PILING RIG</b> Bauer BG28 Piling Rig <b>&amp; TYRE MOUNT PILING RIG'S</b>	 
04	<b>1-POCKLANE (EXCAVATOR)</b> Tata 220, 210 <b>2-Hydra (Farana)</b> <b>3-JCB</b>	 





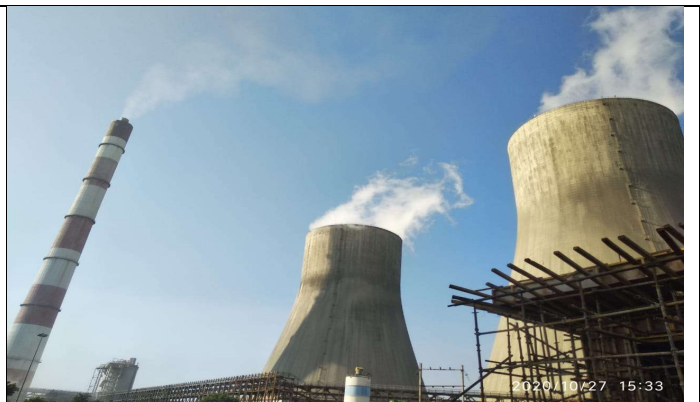
# 12-Strength in Knowledge & Our TEAM.

Prime Contracts **PMC / Contactor's** is young, growing company groups of engineers, project managers and problem solvers. Our Senior management team represents the mechanical, civil, structural, electrical control EHS engineering disciplines. They have experience as project / construction managers and lead engineers on small, medium and mega projects, covering a wide range of mineral processes metal and industrial work.

	<b>MR. ABHIMANIYU ABITKAR</b> <b>STRUCTURE HEAD</b>	Mr. Abhimaniyu Abitkar worked as Principal Structure Engineer at Scurr Energy India Private Limited.  M.E. Structure Government Engineering college Pune-2010
	<b>MR. Avinash K Singh</b> <b>CIVIL COODINATOR</b>	Worked as Project Manager having 20 years' experience in Construction, Associated with ISGEC, RBS etc.  B.E. Civil Engineering-2007 from Government College Nagpur
	<b>MR. PREM SHANKAR SHARMA</b> <b>QS- BILLING HEAD</b>	Worked as QS Billing having experience in QS Billing 18 Year's, Associated with KSS, Simplex etc.  B.E. Civil Engineering from Government College Agra U.P.
	<b>MR. PARVEEN KUMAR SINGH</b> <b>HR &amp; ADMIN</b>	Worked as HR & Admin having experience in 15 Year's, Associated with KSS, Relience etc.  MBA from Indian Institute of Management-Pune -2007
	<b>SYED ETISHAM ALI</b> <b>ASSISTANT STRUCTURE DESIGNER</b>	Syed Etisham Ali Associated with PC as Assistant Structure Designer & details engineer. Pass out M.E. Structure Engineering <b>IIT-INDORE-2023</b>
	<b>SYED ARBAB ALI</b> <b>STRUCTURE DESIGNER</b>	Mr. Arbab Ali Associated with PC as Assistant Structure Designer & Details engineer. Pass out <b>M.E. Structure Engineering</b> from Zakir Aligarh Muslim University-2021
	<b>SYED DANISH AHMAD</b> <b>SITE EXECUTION</b>	Associated with PC and Execute /QHSE work. B.E. Civil Engineering Indraprastha Engineering College Ghaziabad (IPEC)-2023

## 13-Some of Our Associate Esteemed & Prestigious Clients.



# 14-Current ongoing Project's.

## CONSTRUCTION OF SUBSTATION & ADMIN BUILDING

Nature Of Work.  
Value of Project.  
Year's.  
Client.  
Consultant.  
Type of Work.  
Location.

- **CONSTRUCTION**
- **G+2 FLOOR Building Projects**
- **10 Cr**
- **2025**
- **CIDCO**
- **M.G**
- **Panvel (Maharashtra)**



## DETAIL DESIGN ENGINEERING- 2B+G+8F

Type of Projects  
Nature Of Work.

Value of Project  
Year's  
Client  
Consultant  
Type of Work  
Location

- **DETAILED DESIGN**
- **2B+G+8 FLOOR Building Design Projects**
- **02 Cr**
- **2023**
- **R.Builder**
- **Builder firm**
- **R.C.C. DESIGN**
- **Ludhiana (Punjab)**

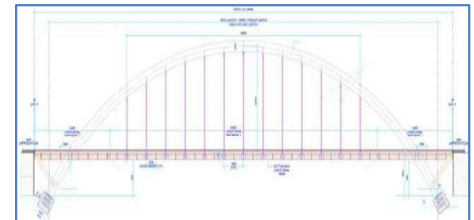


## DETAIL DESIGN OF FOUNDATION ANALYSIS & BRIDGE DESIGN

Type of Projects  
Nature Of Work.

Value of Project  
Year's  
Client  
Consultant  
Type of Work  
Location

- **BRIDGE DESIGN**
- **Two Lanning ROB at LC 78 Projects**
- **06 Cr**
- **2022**
- **Haryana Railway Bridge Design**
- **HRBD**
- **R.C.C DESIGN**
- **Rewari (Haryana)**



## R.C.C DESIGN & CONSTRUCTION EXECUTION JOB

Type of Projects  
Nature Of Work.

Value of Project  
Year's  
Client  
Consultant  
Type of Work  
Location

- **SOCIETY FLAT CONST**
- **R.C.C FRAME STRUTURE- 1B+G+6 Building Project**
- **08 Cr**
- **2024**
- **Doctors Society**
- **Private Property**
- **R.C.C DESIGN & Construction**
- **Andheri (Mumbai)**





# 15-Prestigious Projects Completed by Our Construction & Associate Team.

## 2X500MW

### THERMAL POWER PROJECT

Type of Projects  
Nature Of Work.

Value of Project  
Year's  
Client  
Consultant  
Type of Work  
Location

- 2x500MW MAHAGENCO
- Construction 275M R.C.C Chimney
- 48 Cr
- 2005
- MAHAGENCO
- TCE
- Construction & Execution
- Bhusawal (Maharashtra)



## 2X500MW

### THERMAL POWER PROJECT

Type of Projects  
Nature Of Work.

Value of Project  
Year's  
Client  
Consultant  
Type of Work  
Location

- 2x500MW MAHAGENCO
- Construction 170M R.C.C NDCT COOLING TOWER
- 28 Cr
- 2005
- MAHAGENCO
- TCE
- Construction & Execution
- Bhusawal (Maharashtra)



## OIL & GAS REFINERY PROJECT

Type of Projects  
Nature Of Work.

Value of Project  
Year's  
Client  
Consultant  
Type of Work  
Location

- BARUNI REFINERY EXT
- EXTENTION OF SULPHUR UNIT
- 23 Cr
- 2021
- IOCL
- TOYO
- Construction & Execution
- Barauni (BIHAR)



## SCHOOL PROJECT

Type of Projects  
Nature Of Work.  
Value of Project  
Year's  
Client  
Consultant  
Type of Work  
Location

- SCHOOL CONSTRUCTION
- DESIGN & CONSTRUCTION
- 03 Cr
- 2002
- S.K. PUBLIC SCHOOL
- Private
- Construction & Execution
- Aligarh (Uttar Pradesh)



**NVDA-MICRO IRRIGATION**

Type of Projects  
Nature Of Work.

Value of Project  
Year's  
Client  
Consultant  
Type of Work  
Location

- **Construction & EXECUTION**
- **Construction of R.C.C Pumping Station, Substation.**
- **18 Cr**
- **2019**
- **JMC PROJECTS**
- **NVDA**
- **Construction & Execution**
- **Jhabua (Madhya Pradesh)**

**KAZESTROY 6X660MW KSK THERMAL POWER**

Type of Projects  
Nature Of Work.

Value of Project  
Year's  
Client  
Consultant  
Type of Work  
Location

- **Construction of Industrial**
- **Construction of R.C.C Silo & DM PT Area.**
- **12 Cr**
- **2014**
- **KSK Thermal power**
- **SEPCO**
- **Construction & Execution**
- **Bilaspur (Chhattisgarh)**

**DETAIL DESIGN ENGINEERING-INSTITUTION**

Type of Projects  
Nature Of Work.

Value of Project  
Year's  
Client  
Consultant  
Type of Work  
Location

- **DETAILED DESIGN**
- **Institutional Building Design Projects**
- **02 Cr**
- **2018**
- **IILM**
- **Architect**
- **R.C.C. DESIGN**
- **New Delhi**



# 16- Registration in Government

UDYAM REGISTRATION CERTIFICATE																															
UDYAM REGISTRATION NUMBER		UDYAM-MH-19-0363134																													
NAME OF ENTERPRISE		PRIME CONTRACTS																													
TYPE OF ENTERPRISE *		<table border="1"> <thead> <tr> <th>S.No.</th> <th>Classification Year</th> <th>Enterprise Type</th> <th>Classification Date</th> </tr> </thead> <tbody> <tr> <td>1</td> <td>2025-26</td> <td>Micro</td> <td>16/06/2025</td> </tr> </tbody> </table>		S.No.	Classification Year	Enterprise Type	Classification Date	1	2025-26	Micro	16/06/2025																				
S.No.	Classification Year	Enterprise Type	Classification Date																												
1	2025-26	Micro	16/06/2025																												
MAJOR ACTIVITY		<div style="background-color: green; color: white; text-align: center; padding: 5px;"><b>SERVICES</b></div>																													
SOCIAL CATEGORY OF ENTREPRENEUR																															
NAME OF UNIT(S)																															
OFFICIAL ADDRESS OF ENTERPRISE		<div style="text-align: center;">GENERAL</div> <table border="1"> <thead> <tr> <th>S.No.</th> <th colspan="3">Name of Unit(s)</th> </tr> </thead> <tbody> <tr> <td>1</td> <td colspan="3">PRIME CONTRACTS</td> </tr> </tbody> </table> <table border="1"> <thead> <tr> <th>Flat/Door/Block No.</th> <th>UNIT-3</th> <th>Name of Premises/ Building</th> <th>BHAVESHWAR PLAZA</th> </tr> </thead> <tbody> <tr> <td>Village/Town</td> <td>NEAR BHAVESHWAR SHOPPING PLAZA</td> <td>Block</td> <td>GHATKOPAR</td> </tr> <tr> <td>Road/Street/Lane</td> <td>L B S ROAD</td> <td>City</td> <td>GHATKOPAR WEST</td> </tr> <tr> <td>State</td> <td>MAHARASHTRA</td> <td>District</td> <td>MUMBAI , Pin 400086</td> </tr> <tr> <td>Mobile</td> <td>9820191885</td> <td>Email:</td> <td>akbarlaunchpad@gmail.com</td> </tr> </tbody> </table>		S.No.	Name of Unit(s)			1	PRIME CONTRACTS			Flat/Door/Block No.	UNIT-3	Name of Premises/ Building	BHAVESHWAR PLAZA	Village/Town	NEAR BHAVESHWAR SHOPPING PLAZA	Block	GHATKOPAR	Road/Street/Lane	L B S ROAD	City	GHATKOPAR WEST	State	MAHARASHTRA	District	MUMBAI , Pin 400086	Mobile	9820191885	Email:	akbarlaunchpad@gmail.com
S.No.	Name of Unit(s)																														
1	PRIME CONTRACTS																														
Flat/Door/Block No.	UNIT-3	Name of Premises/ Building	BHAVESHWAR PLAZA																												
Village/Town	NEAR BHAVESHWAR SHOPPING PLAZA	Block	GHATKOPAR																												
Road/Street/Lane	L B S ROAD	City	GHATKOPAR WEST																												
State	MAHARASHTRA	District	MUMBAI , Pin 400086																												
Mobile	9820191885	Email:	akbarlaunchpad@gmail.com																												
DATE OF INCORPORATION / REGISTRATION OF ENTERPRISE		02/06/2025																													
DATE OF COMMENCEMENT OF PRODUCTION/BUSINESS		02/06/2025																													



## Communication Address

### Corporate Office-

315, 3<sup>rd</sup> FLOOR  
POWAI PLAZA, CENTRAL AVENUE,  
HIRANANDANI GARDEN  
POWAI,  
MUMBAI-400076  
+91-9820191885

### NCR Site Office-

R-1303 / GREAT VALUE SHARANAM  
NOIDA-SECTOR-107  
NCR-PIN-201301, +91-9820191885  
NOIDA Uttar Pradesh

#### Email:

[primecontracts2020@gmail.com](mailto:primecontracts2020@gmail.com)  
[akbarlaunchpad@gmail.com](mailto:akbarlaunchpad@gmail.com)

Please Visit  [www.primecontracts.in](http://www.primecontracts.in)

**Corporate Office :** 315, 3rd Floor, Powai Plaza, Central Avenue, Hiranandani Garden, Powai, Mumbai-400076  
**Regd. Office :** 20A /Pocket-3, Mayur Vihar-phase-01, Delhi-110091